

HISTORY OF ANCIENT GREECE

TROY

DISCOVERY AND TREASURE



BLACK SEA

GREECE

Troy

TROAD

ITHACA

AEGEAN SEA

ANATOLIA

Mycenae

Athens

Izmir

Tiryns

Pylos

THERA

CRETE

CYPRUS

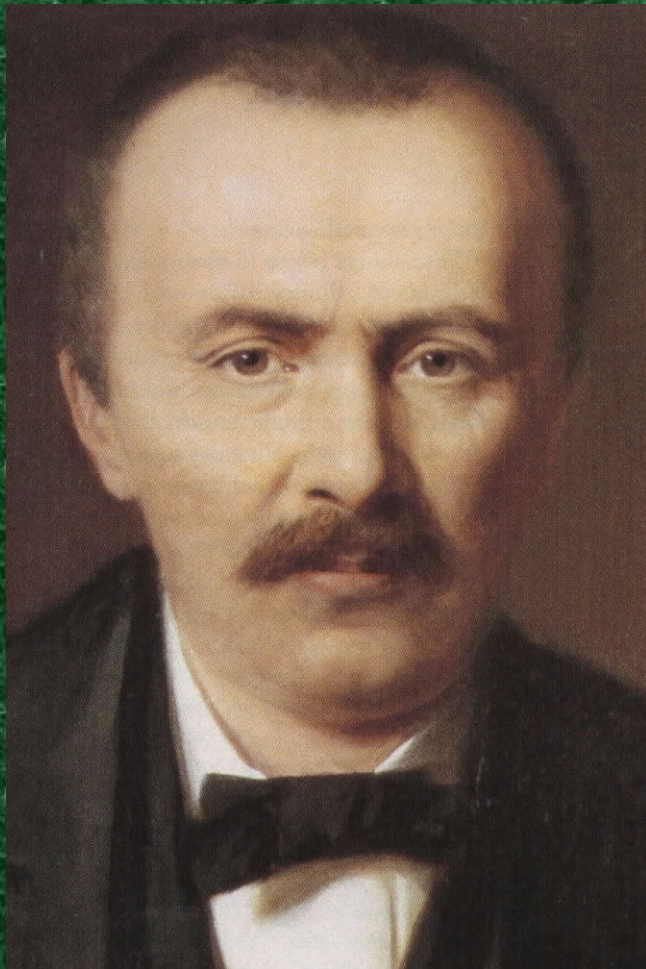
Ugarit

MEDITERRANEAN SEA

The Hellespont



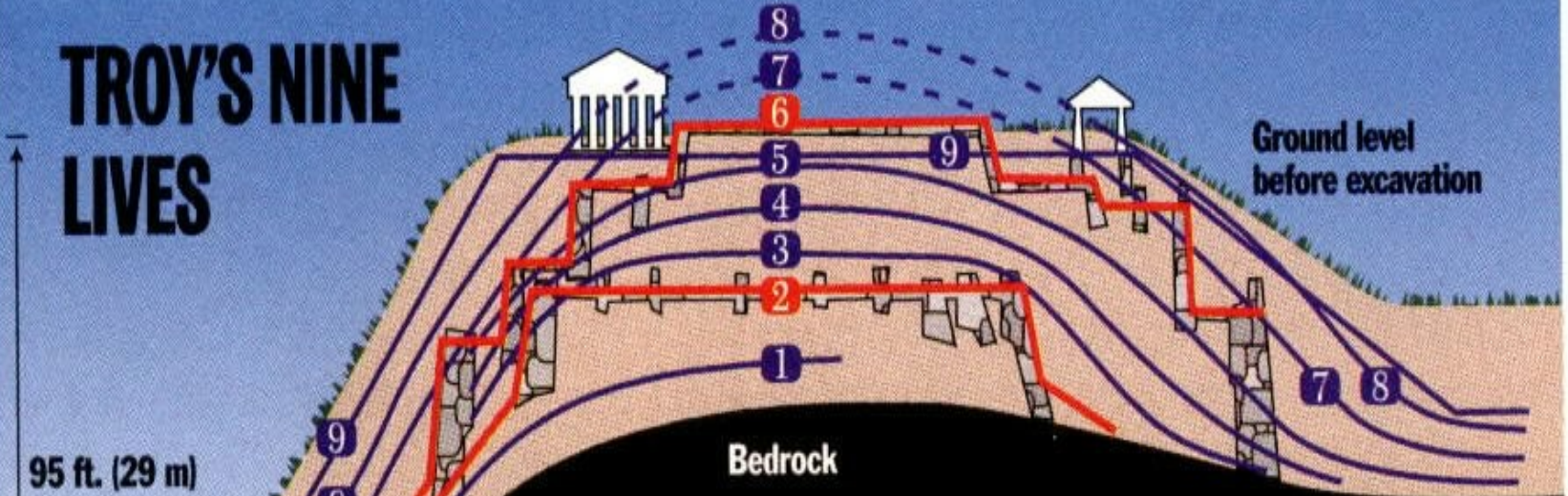
Heinrich and Sophie Schliemann



Troy/Hisarlik Today



TROY'S NINE LIVES



95 ft. (29 m)

Bedrock

Ground level before excavation

Level 6 corresponds to Homer's Troy (1400 B.C.), but Schliemann found Priam's Treasure on level 2 (2500 B.C). The mound was shaved flat during the Roman Empire, exposing the older layers

A map of the Aegean Sea region, showing the coastlines of Greece and Turkey. The Aegean Sea is labeled in the center. Athens is marked with a star in Greece, and Istanbul is marked with a star in Turkey. Troy is marked with a red dot on the northern coast of Turkey. A scale bar at the bottom right shows 0 to 50 miles and 0 to 50 kilometers.

Troy VI



Troy VI



Troy VI Main Wall



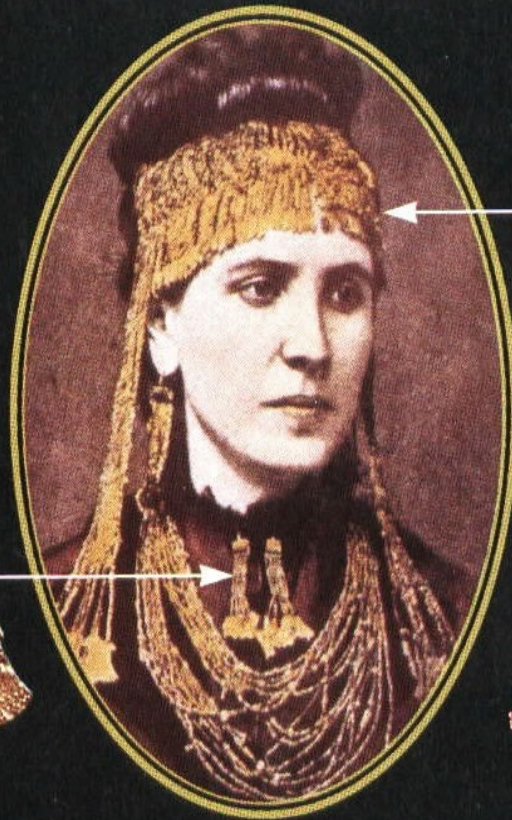
Sophie and Treasure

Helen ... Not

Schliemann's wife modeled the gold he found, but it could never have adorned the face that launched a thousand ships



IT'S REALLY AN EARRING

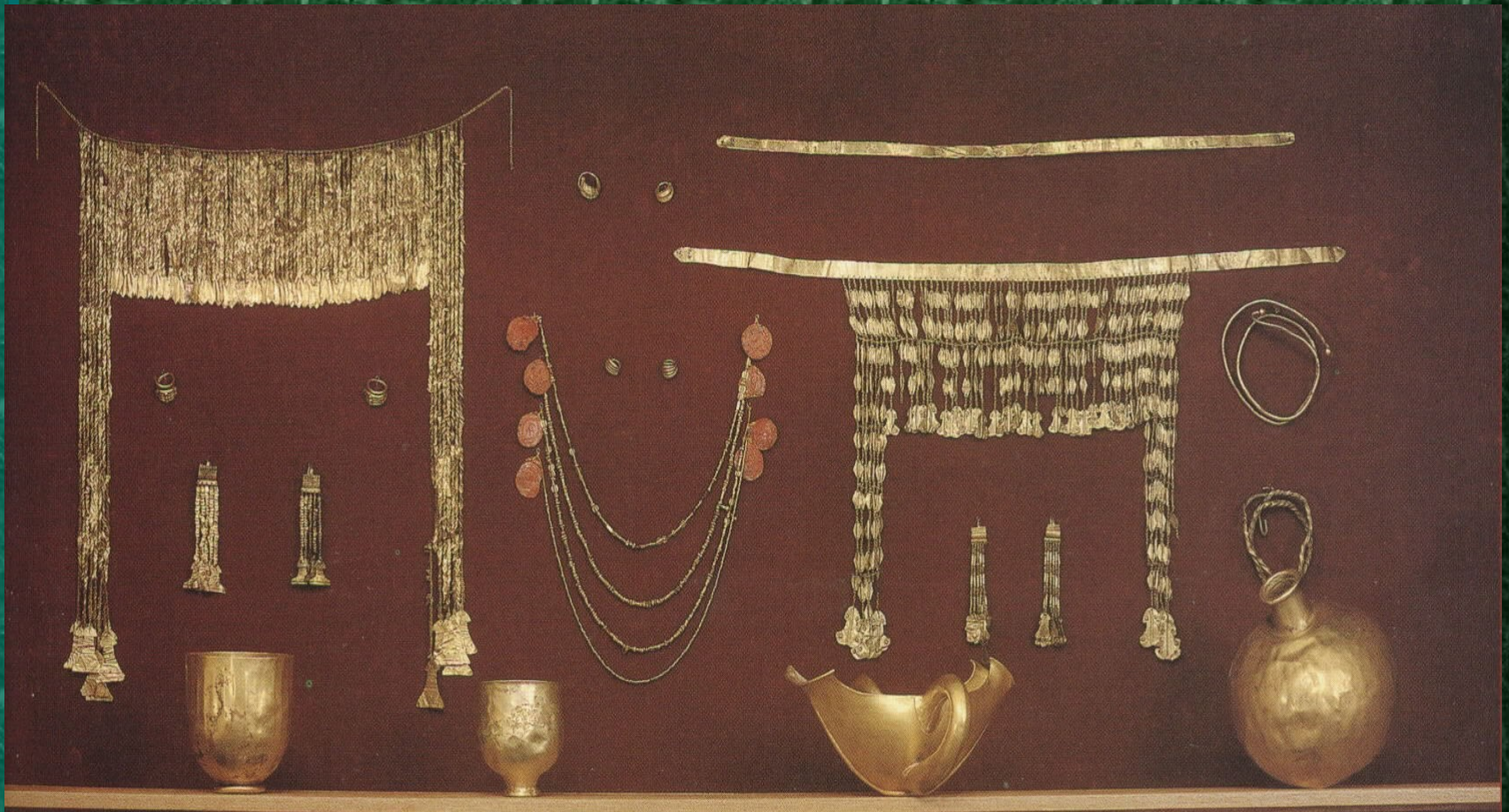


SOPHIA PLAYS QUEEN FOR A DAY



GOLDEN CROWN

Trojan Treasure



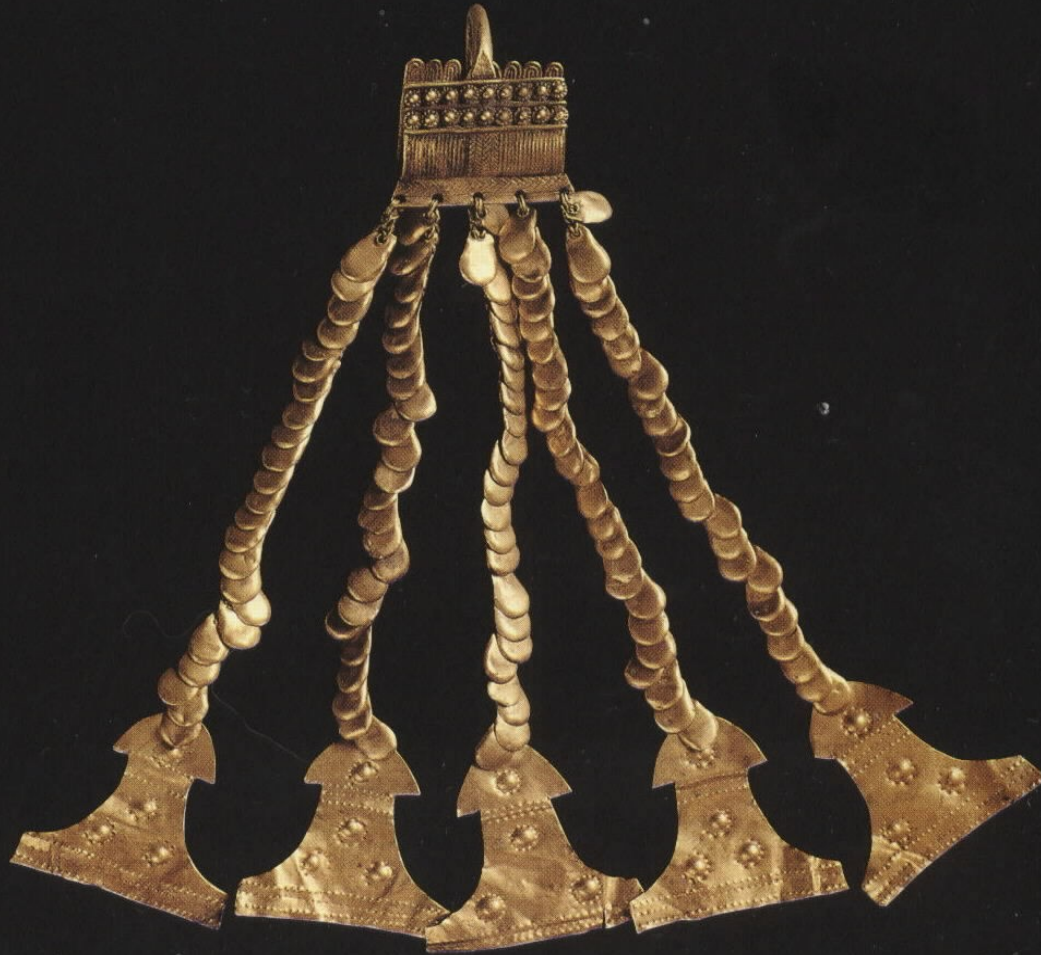
Gold Beads



Gold Bracelet



Gold Earrings



Gold Hair Pin



Gold Hair Rings



Gold Sauceboat

